

CEDAR GROVE ASSOCIATION DRIVING RECOMMENDATIONS*

Leave on time.



SF PKWAY



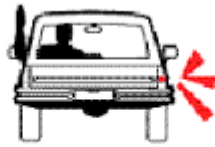
SUBDIVISIONS

- Drive the speed limit.
- The state police, local police and the sheriff can ticket a driver for going one mile above the speed limit.
- In most jurisdictions. You can only drive nine miles above the speed limit before a ticket is issued.
- If you go ten miles above the speed limit. You will get a ticket.

Come to a complete stop at all stop signs including stop signs in subdivisions.



Left Turn



Right Turn

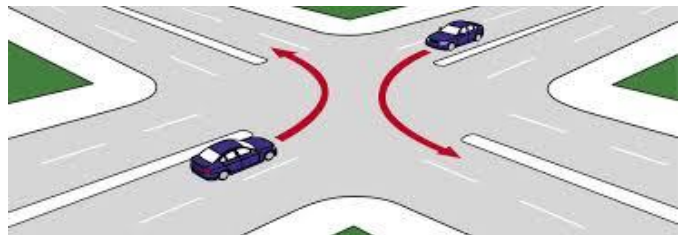


Stop or Slow Down

Signal before changing lanes. An illegal lane change ticket will cost you.

When you turn left. Turn into the left-hand lane.

When you turn right. Turn right into the right-hand lane.



"DUI Doesn't Just Mean Booze"

**DUI DOESN'T
JUST MEAN
BOOZE**

Don't ever drink, smoke marijuana or take pills and drive when operating a motor vehicle. A DUI will cost approximately \$10,000.00

*The Cedar Grove association has recognized an increase in vehicular accidents in the area resulting in serious injuries and deaths. The Association recommends that drivers review the state approved guidelines for driving behaviors. The Association does not accept any liability or responsibility for the recommended driving behaviors in this document.